

---

THALASSA  
BEACHWEAR

LEAVES  
AN IMPRESSION  
COLLECTION

---



# THALASSA BEACHWEAR STORY

Thalassa Beachwear was established in Trinidad and Tobago by two fashion enthusiastic sisters with a passion to create their own unique brand which embodies the idealism of the Caribbean lifestyle and dream. They seek to encapsulate beautiful elements of nature into wearable pieces of art.



ARIELLE & ALYSSA  
**Co-Founders / Designers**

## BEHIND THE BRAND







## VISION & MISSION

" Their vision is to become a globally recognized Caribbean brand while their mission strives to break stereotypes and borders with inclusiveness and versatility of their collections."

Thalassa Beachwear



# THE INSPIRATION

---

Thalassa beachwear is proud to present their 2022 collection "Leaves, an Impression."

This intricate swimwear line is tactfully crafted by blending bold contrasts of geometric laser cut leaves draped over vibrant gradient hues; evoking the dance of light and shadow over lush flora, and highlighting the mesmerizing beauty of Caribbean fauna, in their betta fish tails inspired resort wear designs.


The "Leaves, an Impression" collection is fashion forward, modern, hip with an edgy twist to invoke a remarkable juxtaposition of color and style that encapsulates a fun tropical atmosphere.



---

## LEAVES, AN IMPRESSION





# THE COLLECTION





A. Lasercut Bodysuit Monokini (invisible zipper | ribbed fabric | moderate bikini coverage)

LASER-CUT LEAVES



# HIS & HERS MATCHING SET

---



B. Triangle double lace up bikini top (shoulder holster | adjustable straps | ribbed fabric)

C. High - leg contrasting monokini (cheeky bottom coverage | ribbed & polyester fabric | elastic waistband | peasant sleeve cuffs)

D. Swim trunks with contrasting printed cuffs. (two side pockets | two faux back pockets | Netted lining | elastic waistband | string tie) . See index for pricing.

---

## PRINTED LEAVES





E,F,G

E. Lasercut gradient monokini (deep V | adjustable straps | cheeky bottom coverage | fully lined)

F. Betta inspired ruffle kimono (extra long | open front | string tie | beaded trim)



E,F



F

#### COLORS AVAILABLE

Siamese Purple

Orange Copper

Mustard Yellow

Cambodian Red

#### SIZES AVAILABLE

XSmall

Small

Medium

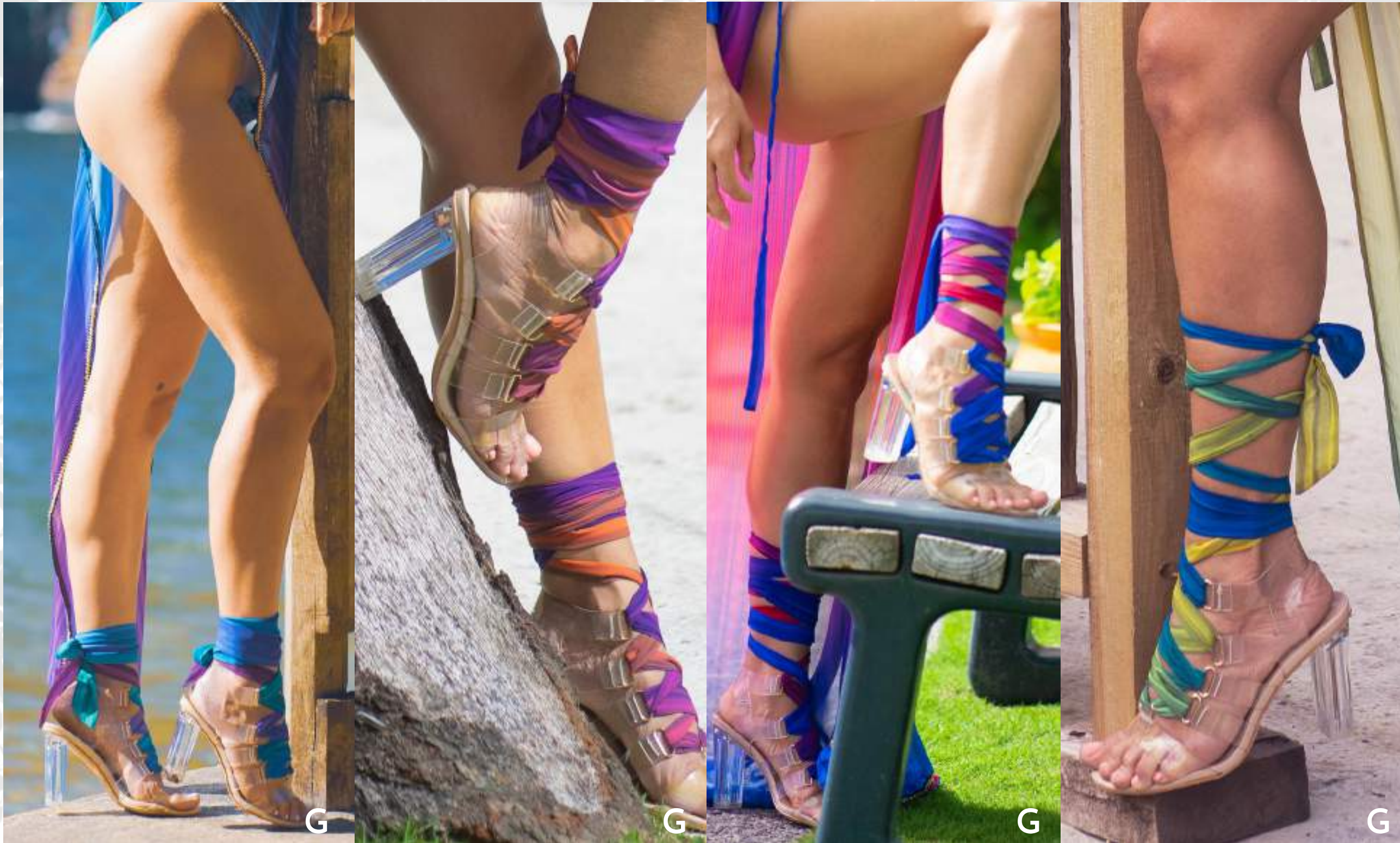
Large

XLarge

NB: The photos above illustrates the Cambodian Red color option and the Mustard Yellow color option respectively. Model is wearing a size SMALL

LASER-CUT OVERLAY ON GRADIENT PRINT





G Beach ribbon heels (3" block heel | gold metal hoops | clear plastic finishing)

COLORS AVAILABLE	COLORS AVAILABLE
Purple Splash	Siamese Purple
Orange Splash	Orange Copper
Mustard Splash	Mustard Yellow
Red Spalsh	Cambodian Red

SIZES AVAILABLE  
US  
5  
6  
7  
8  
9  
10

NB: The photos illustrates the Siamese Purple, the Orange Copper, the Cambodian Red and the Mustard Yellow corlor options respectively. Model is wearing a US size 6

MULTIWEAR SANDALS





**COLORS AVAILABLE**

- Siamese Purple
- Orange Copper
- Mustard Yellow
- Cambodian Red

**SIZES AVAILABLE**

- XSmall
- Small
- Medium
- Large
- XLarge

NB: The photos above illustrates the Cambodian Red color option and the Mustard Yellow color option respectively. Model is wearing a size SMALL

H. Multi-Way coverup (adjustable shoulder hooks | beaded | sheer)

## MULTI-WAY COVERUP





G,I

**COLORS  
AVAILABLE**

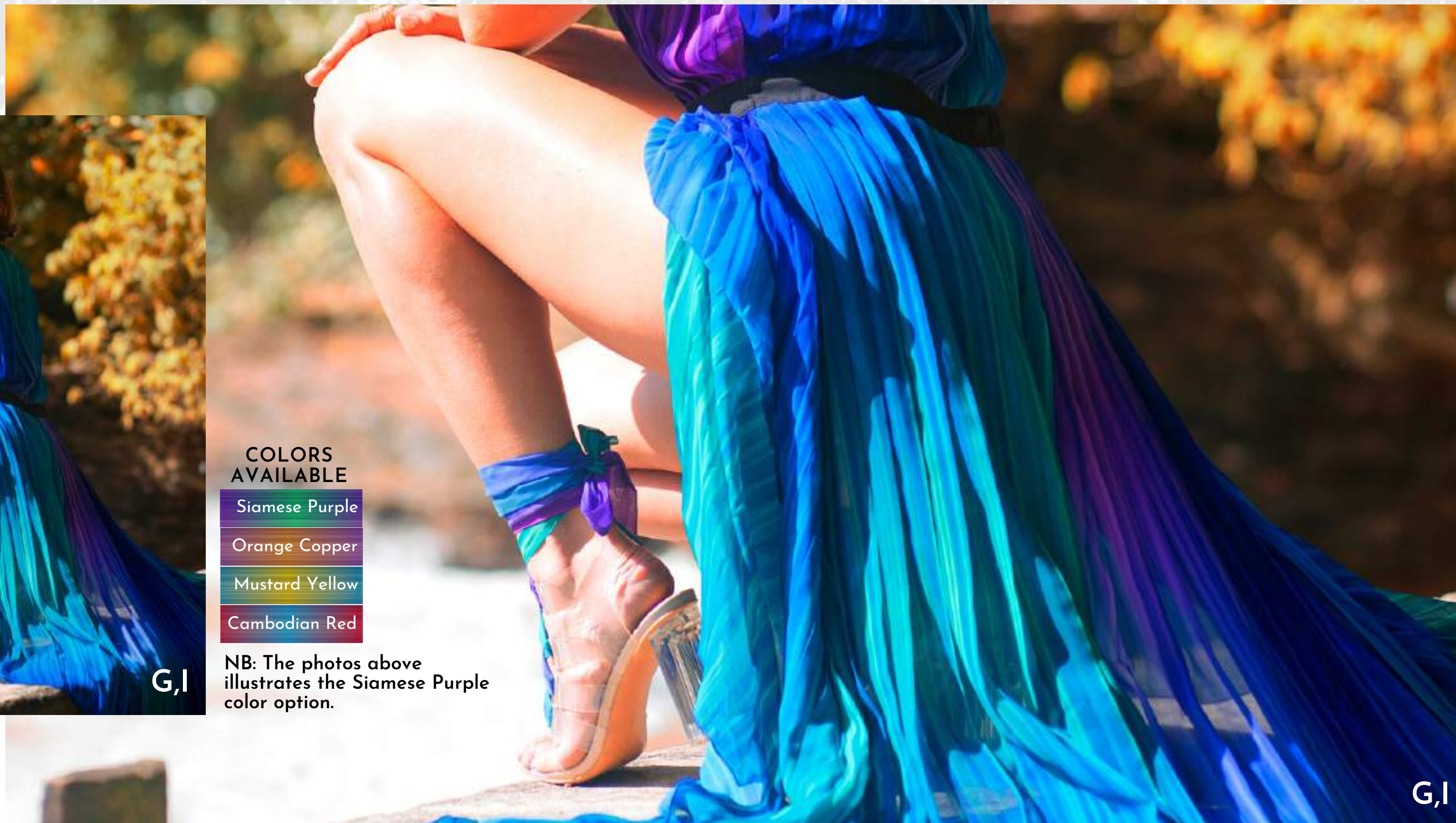
Siamese Purple

Orange Copper

Mustard Yellow

Cambodian Red

NB: The photos above  
illustrates the Siamese Purple  
color option.



G,I

## ACCORDION PLEAT DRESS





I. Sleeveless accordion pleated resort wear dress. Sheer, no lining. Side zipper. Button neck. 3/4 length. Middle frontal slit.

## ACCORDION PLEAT DRESS





#### COLORS AVAILABLE

Siamese Purple

Orange Copper

Mustard Yellow

Cambodian Red

#### SIZES AVAILABLE

XSmall

Small

Medium

Large

XLarge

NB: The photos illustrates the Purple Splash color option and the Orange Splash color option respectively. Model is wearing a size SMALL

J. Open split smocked tube dress (two knotted back ties | beaded | sheer | elastic waist band)

K. Smocked high leg bikini bottom (cheeky coverage | fully lined)

## SMOCKED TUBE DRESS





**BIKINI  
COLORS  
AVAILABLE**

Purple Splash

Orange Splash

Mustard Splash

Red Spalsh

**SARONG  
COLORS  
AVAILABLE**

Siamese Purple

Orange Copper

Mustard Yellow

Cambodian Red

**SIZES  
AVAILABLE**

XSmall

Small

Medium

Large

XLarge

**SIZES  
AVAILABLE**

XSmall

Small

Medium

Large

XLarge

NB: The photos illustrates the Purple Splash color option and the Orange Splash color option respectively. Model is wearing a size SMALL

NB: The photos illustrates the Siamese Purple Splash color option and the Copper Orange Splash color option respectively. Model is wearing a size SMALL

L. Invisible string triangle bikini (adjustable straps | minimal bottom coverage)

M. Beach sarong 72L x 45W (inches)

**BIKINI WITH BEACH WRAP**





COLORS  
AVAILABLE

- Purple Splash
- Orange Splash
- Mustard Splash
- Red Spalsh

SIZES  
AVAILABLE  
XSmall  
Small  
Medium  
Large  
XLarge

NB: The photos  
illustrates the Purple  
Splash color option.  
Model is wearing a  
size SMALL

N. Knotted long bell sleeves top (Cropped | front tie)  
P. Long high waisted circle skirt (side zipper | two side pockets | pleated)

## RESORT WEAR SET





- O. One shoulder top with side tie (removable padding | fully lined)
- R High waisted bottom with drape trail (full bottom coverage | fully lined)
- S. Adjustable FaceMask (swim fabric | quick dry)

NB: The photos illustrates the Mustard Splash color option and the Purple Splash color option respectively. Model is wearing a size SMALL

#### SIZES AVAILABLE

XSmall  
Small  
Medium  
Large  
XLarge

#### COLORS AVAILABLE

Purple Splash  
Orange Splash  
Mustard Splash  
Red Spalsh

## RESORT WEAR SET





# Short Teaser

**click to play**



---

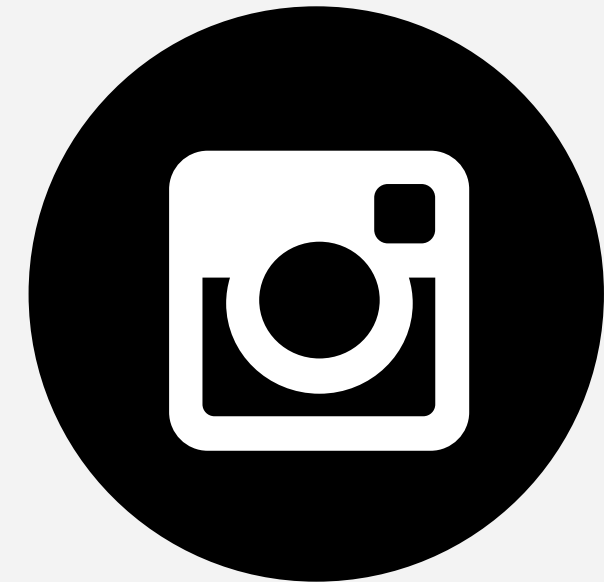
**Connect With Us** 



FACEBOOK



YOUTUBE



INSTAGRAM

---



# CONTACT INFORMATION

---

## MAILING ADDRESS

33 Ruth Avenue, Les Efforts West,  
San Fernando, Trinidad & Tobago, W.I

## EMAIL ADDRESS

thalassabeachwear@gmail.com

## PHONE NUMBER

(868) 389 8828

(868) 316 9876

## WEBSITE

[www.thalassabeachwear.com](http://www.thalassabeachwear.com)

---